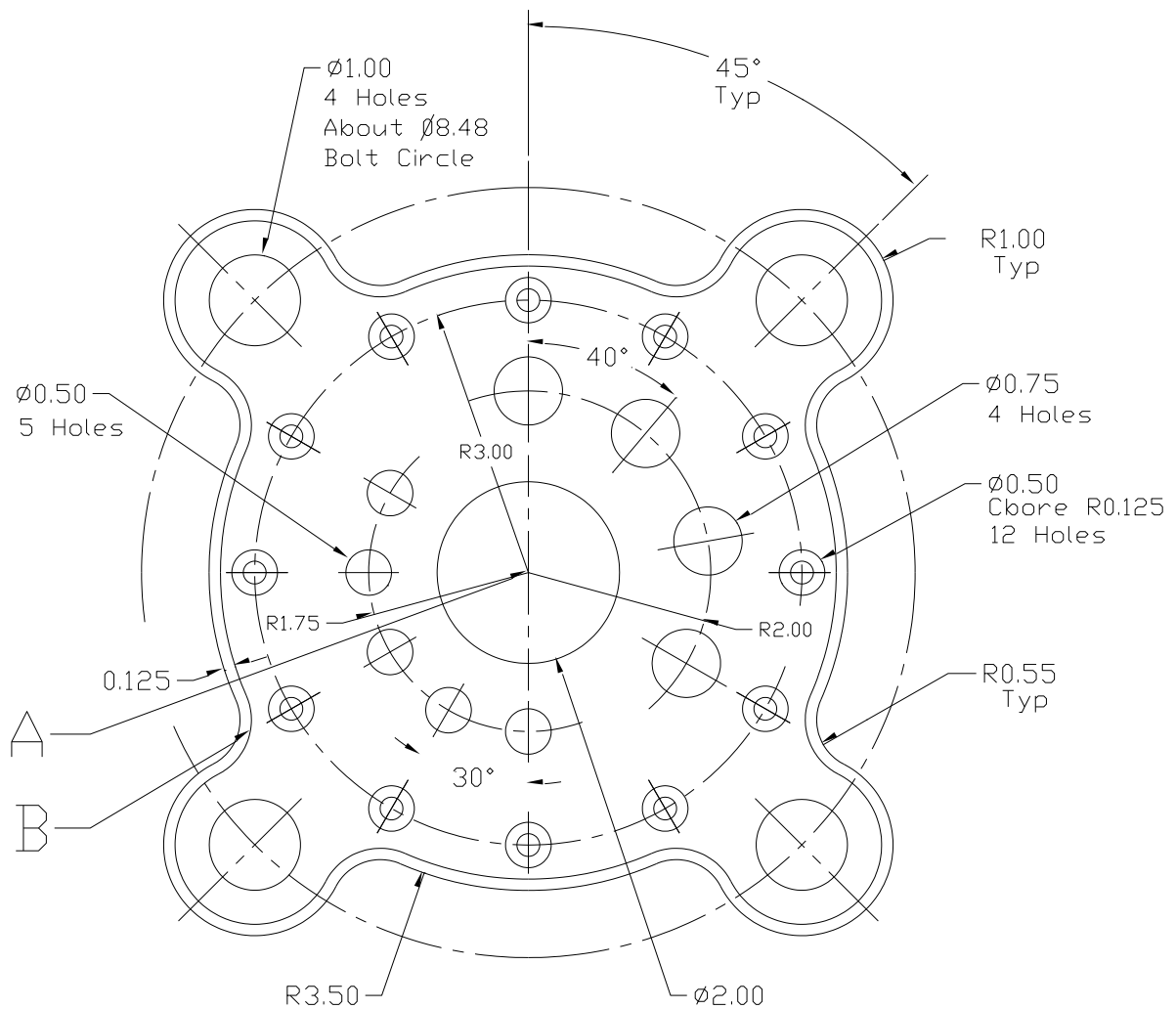


CAD – Gasket Three

Assignment #6

Read the instructions carefully before you begin. You need to figure out what commands to use and the order you will use them in to reproduce this drawing. Remember that this is a puzzle and you need to find the clues that will make reproducing this drawing quick and easy. The following is a list of possible commands you will use (you will use some of them more than once);

Line, circle, fillet, trim, copy, move, offset, array, mirror, dimension, layer, text



Starting with your **Imperial Border template**. Open your Imperial Border template drawing and then immediately save is as; **gasket3-name.dwg**

Before you begin double your drawing limits to 22,17. Then scale your border up to reflect the limits change.

Command: Scale (enter)

Pick your entire border (enter)

Basepoint: use the bottom left corner of the border for this

Scale factor: 2.0 (enter)

Make sure your layer is set to Object. Now, begin this drawing with point "A" at 11,8. Draw the object based on the command list you have created.

Hint: you might want to draw circles to help with the drawing of the object and then change the layer of the circles at a later date to centre lines.

When your drawing is completed make sure point B has a radius of .675 (.68)

Change layers to dimensions. Add your dimensions. You need the following types;

Linear Radius, Diameter

Finally add text to your title block (change layers to border). You may have to change text height and scale factor to make your name, date and title fit in the spaces.

Marking

Layers correct (2)

Drawing correct (10)

Printed correctly (1)

Dimensioned correctly (2)

Mak /15