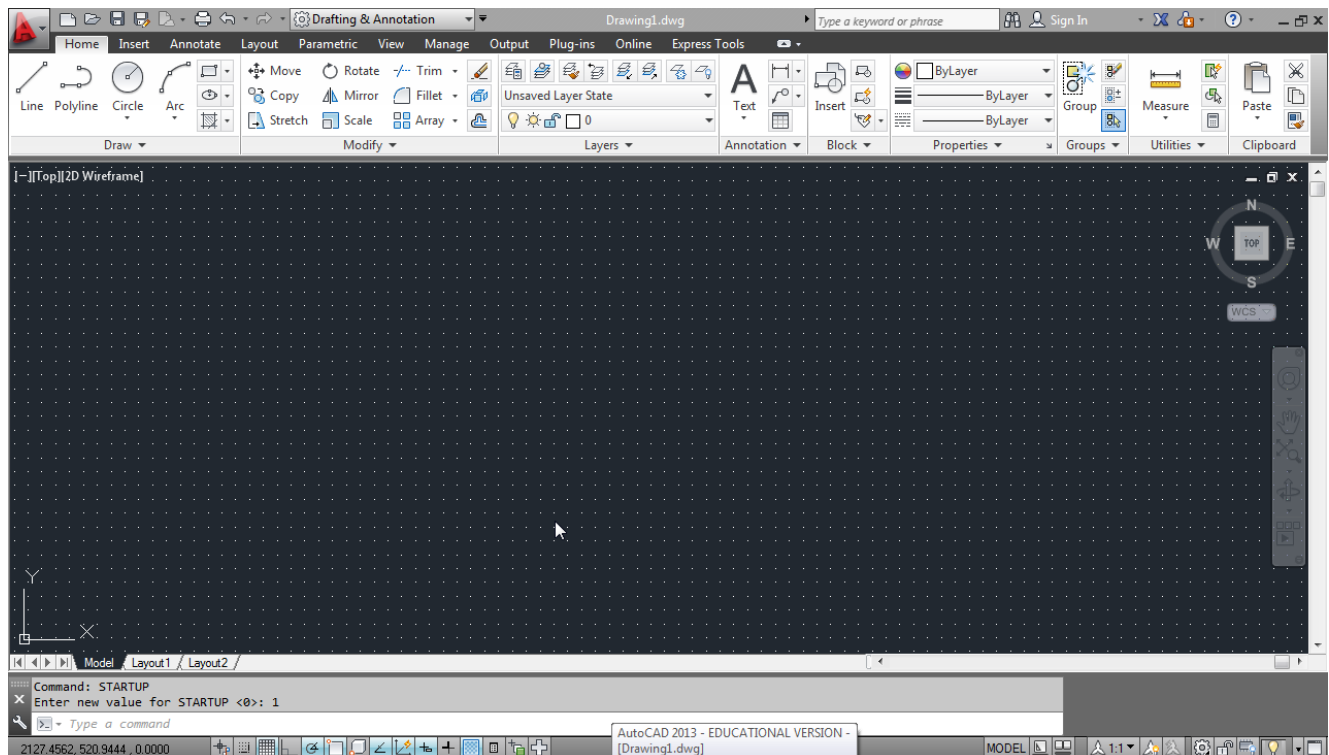


# Introduction to AutoCAD 2013

## Setting up your Model Space

### Starting up

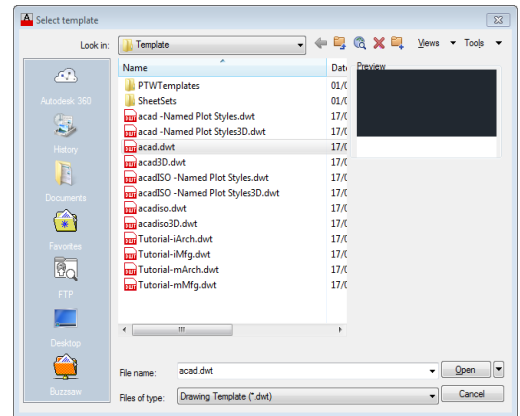
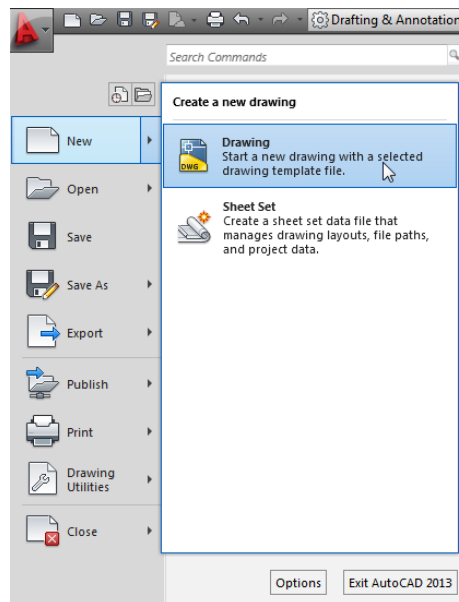
Double-click the AutoCAD Icon on the desktop. The program will start and a blank page something like the one below will now appear on the screen.



Each time you start a CAD drawing you need to setup the operating parameters such as colors, layers, drawing units and limits. Instead of making these settings each time it's better to create a **DRAWING TEMPLATE** with all your favorite settings. In this tutorial you are going to create an imperial (inches) drawing template. You will use this drawing template as a basis for all of the drawings you will complete in the course.

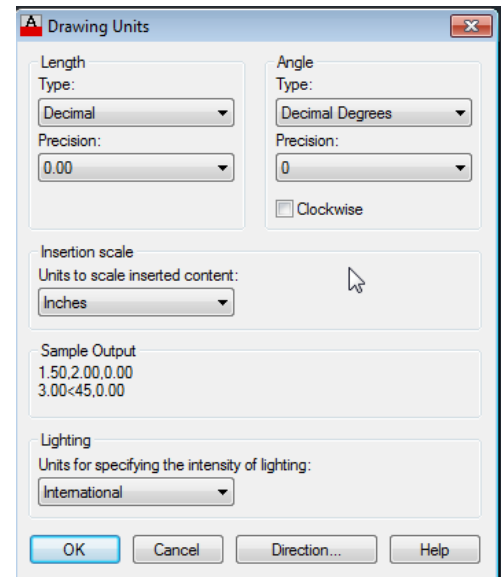
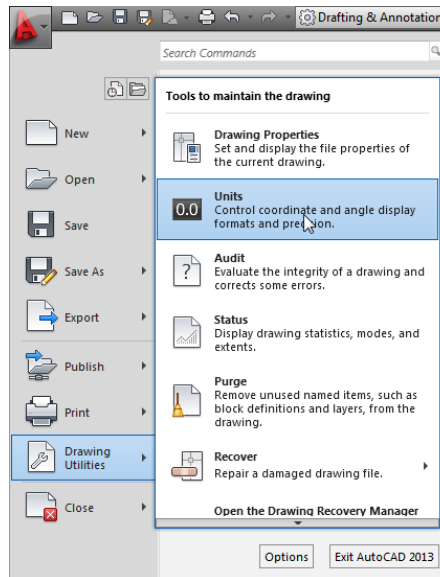
## Setting Up the Drawing Template (Imperial setting)

To start, ensure you have the default template that AutoCAD has opened up. Go to the **Application Menu** (Letter “A” in top left hand corner of the program) and select “New” and then the “acad.dwt” template to get you started. This just ensures you have a fresh template to work from with some

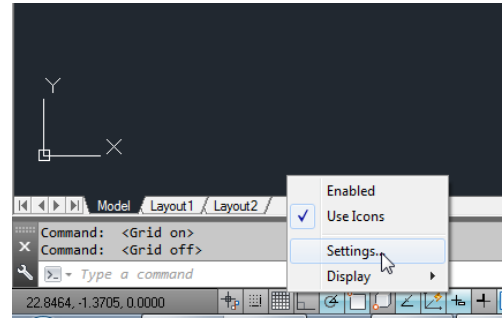


basic settings already in it

Next go back to the **Application Menu** and make sure the **UNITS** are set to Inches. At this point you can also set the **Type** of Drawing units (Set to Decimal), the **Precision** (Set to 2 decimal places), **Angle Type** (Decimal Degrees) and it's **Precision** (no decimal place).

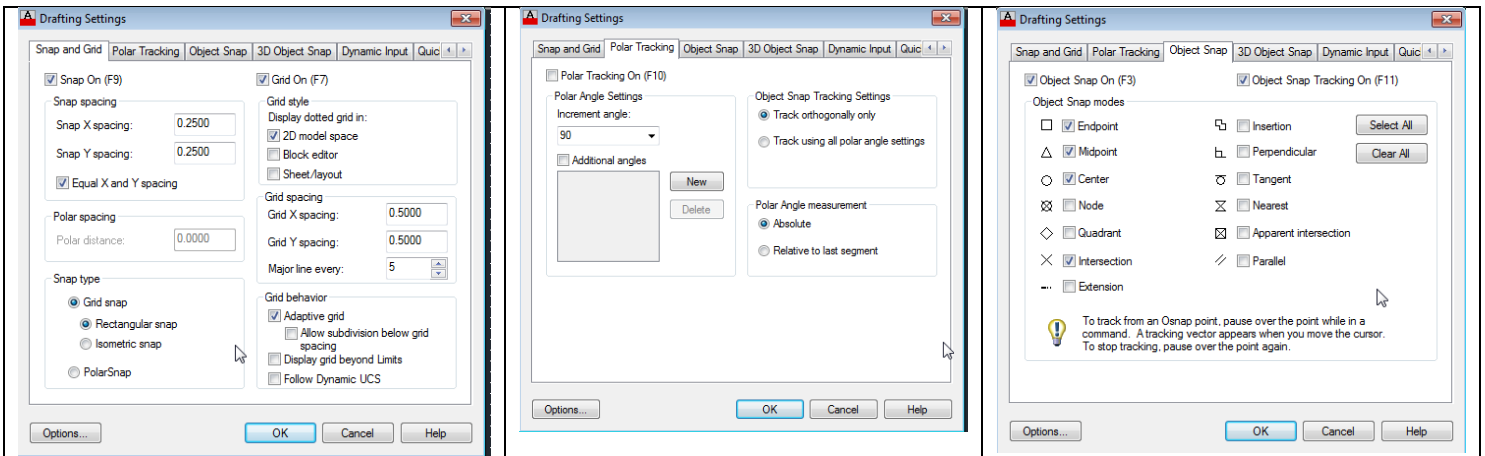


Next you will setup the settings to deal with actually drawing and how the software will do this. At the bottom on the screen right mouse click on either the Grid or Snap icons and then select “Settings”



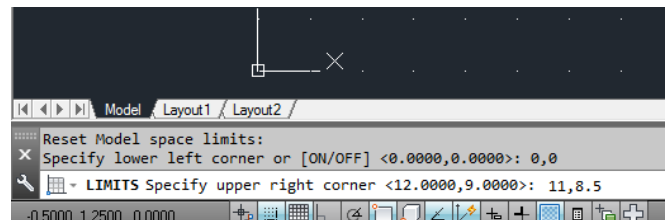
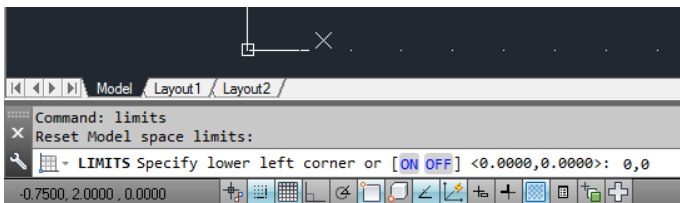
Snap/Grid Icons

In the Drafting Settings Dialog Box that comes up, change the following under the Snap and Grid Tab, Polar Tracking Tab and the Object Snap Tab to match the 3 images below.



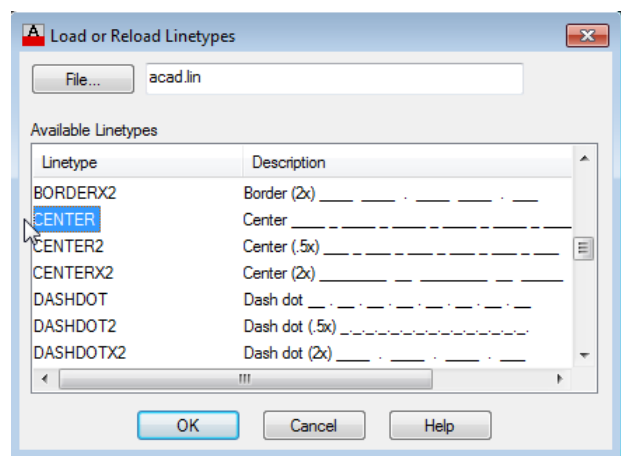
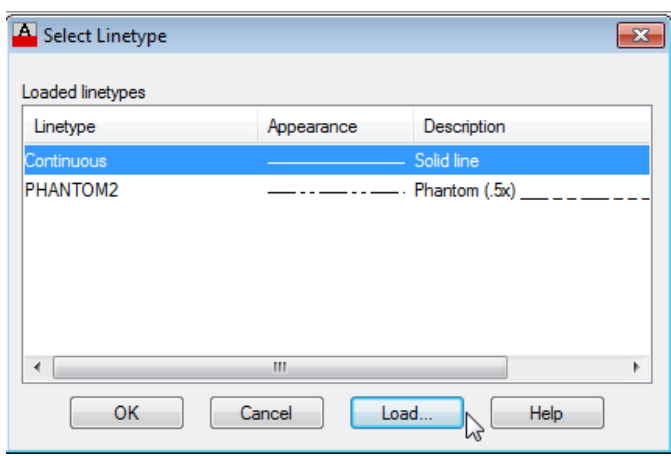
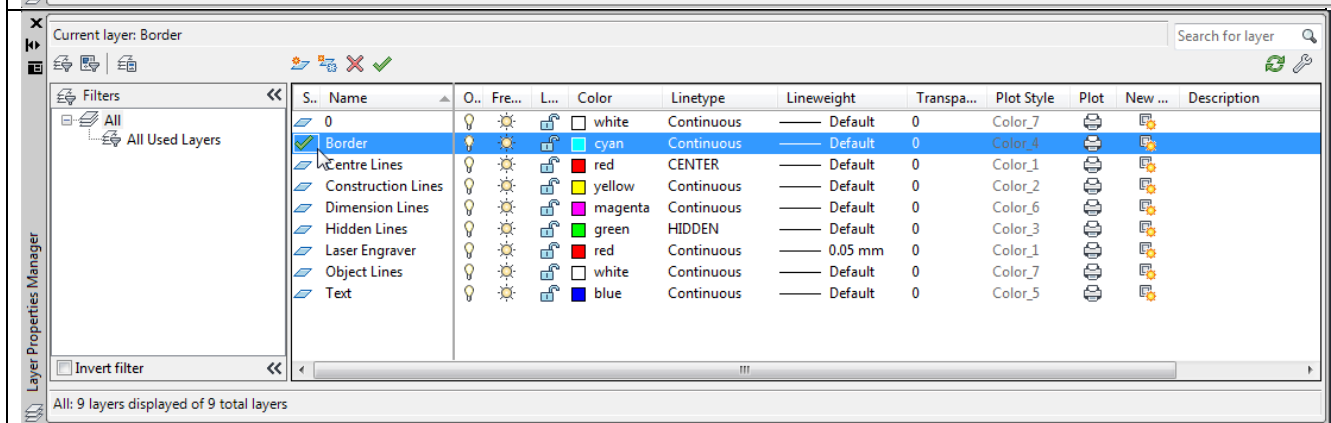
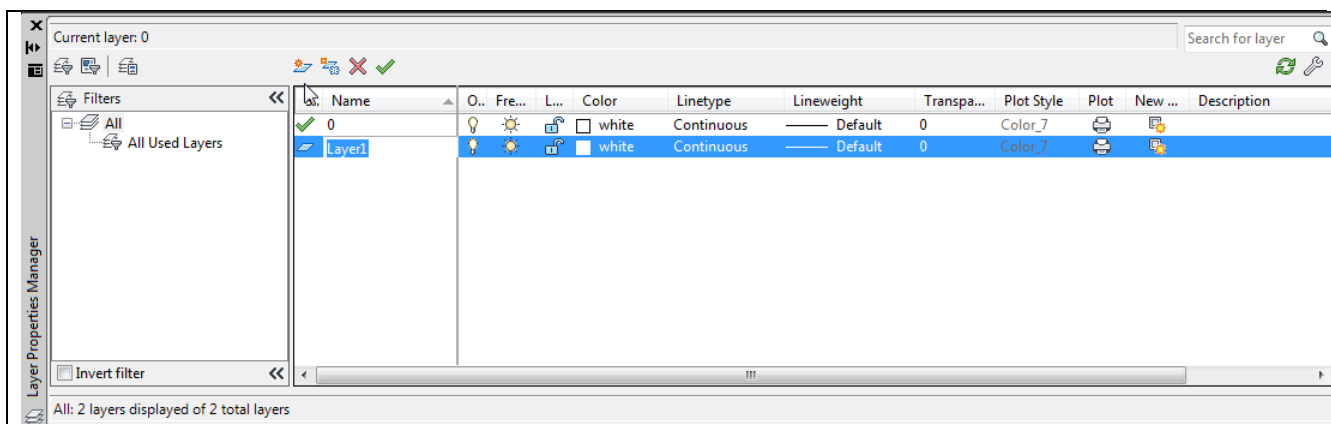
## Limits

Type “Limits”. For this drawing template you are going to make it for an 11” x 8.5” landscape piece of paper. Enter 0,0 for the lower left corner and 11,8.5 for the upper right corner.



# Layers

Layers allow you to turn on and off parts of a Drawing so that the drawing isn't too cluttered. To set up layers, type "Layer" and the following dialog box will come up. There are many different ways to create new layers, the simplest being to click on the **New Item** tool bar icon as shown below. Use the second image below to set up your layers. Double-click on the colours or line types to change them. When you click on the Linetype for "Centre Line" and "Hidden Line", you will have to click on the **Load** button to find the different types (hidden, center, etc). Close the window when finished.

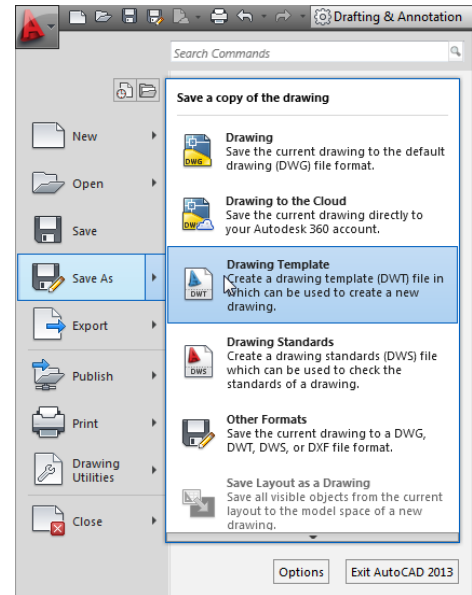


## Saving your Drawing Template

That's it. All you have to do is save this file in your work area. BUT, there is one catch. You must make sure the file extension is .DWT for a drawing template. When you save the file use the SAVE AS option from the File drop down menu and change the Save as type to Drawing Template (dwt).

Name the file: imperial template – name.dwt

Save it to your home directory under a folder called Drafting.



You now have your drawing template set with all the important features. Whenever you want to start a new imperial drawing just pick this drawing template and you will have saved yourself a lot of work.

