

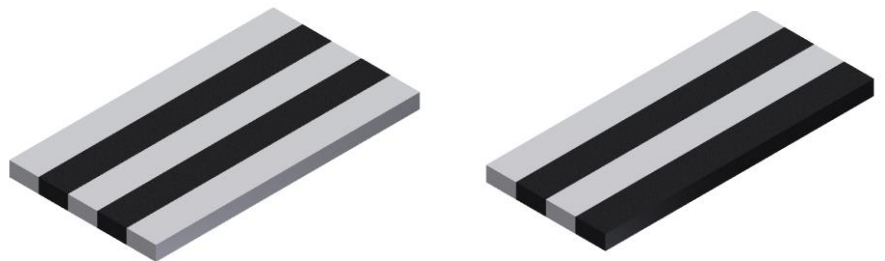
# CHECKERBOARD PROCEDURE

- 1) Break out stock
  - 5 light (maple)                    2" x 17"
  - 4 dark (Black Walnut)            2" x 17"
- 2) Joint face side (mark it)
- 3) Joint face edge (mark it)
- 4) Plane to thickness - keep the pieces as thick as possible
- 5) Rip to **EXACT** width 1 ½"

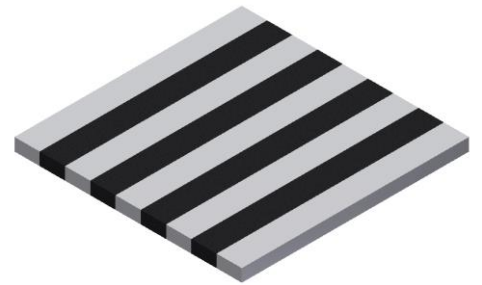
**\*\*\*\*\* CHECK THE FIT BEFORE GLUING \*\*\*\*\***

- 6) Glue the strips together into 2 halves **FIRST!!!**

- A) Glue 2 halves

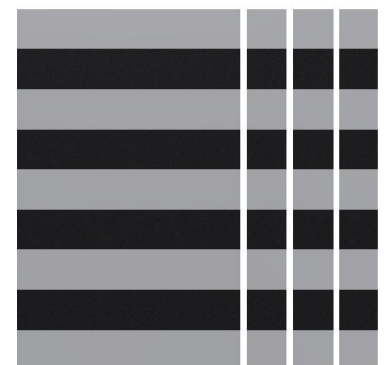


- B) Glue the 2 sets together  
\*\*Re-joint the face side if the glue joint is NOT flat

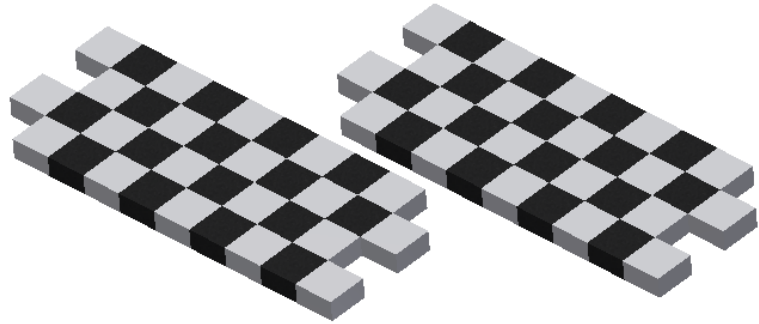


- 7) Cut one end **EXACTLY** square  
- mitre saw or table saw with mitre gauge

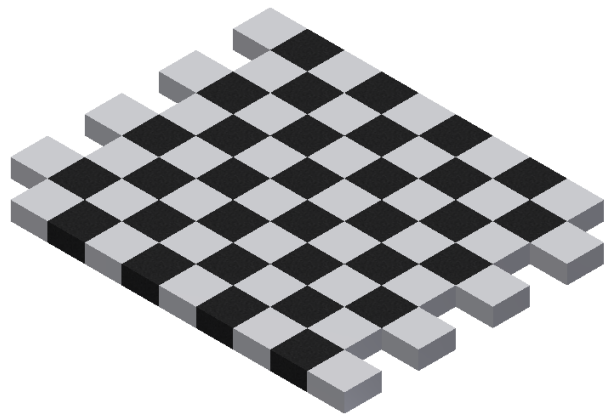
- 8) Rip into strips the same size as step #5 (1 ½")
  - 8 strips are required
  - use the rip fence and splitter



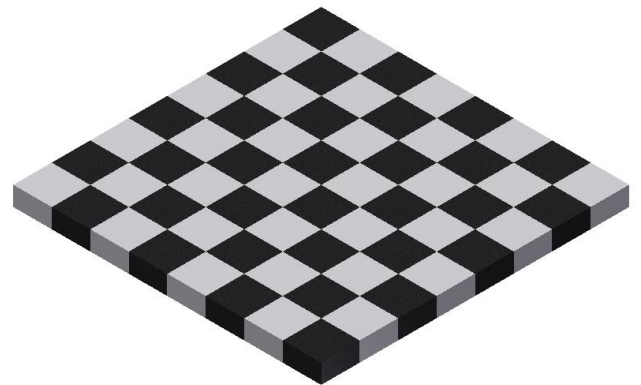
- 9) A) Re-glue the checkerboard together  
- stagger every second row  
- glue 2 halves separately FIRST



- B) Glue the 2 halves together



- 10) Cut off the extra blocks on each end using the mitre gauge on the table saw



- 11) Plane the checkerboard to final thickness  
- use a Carrier Board

- 12) Sand to 220 grit

- 13) Stain