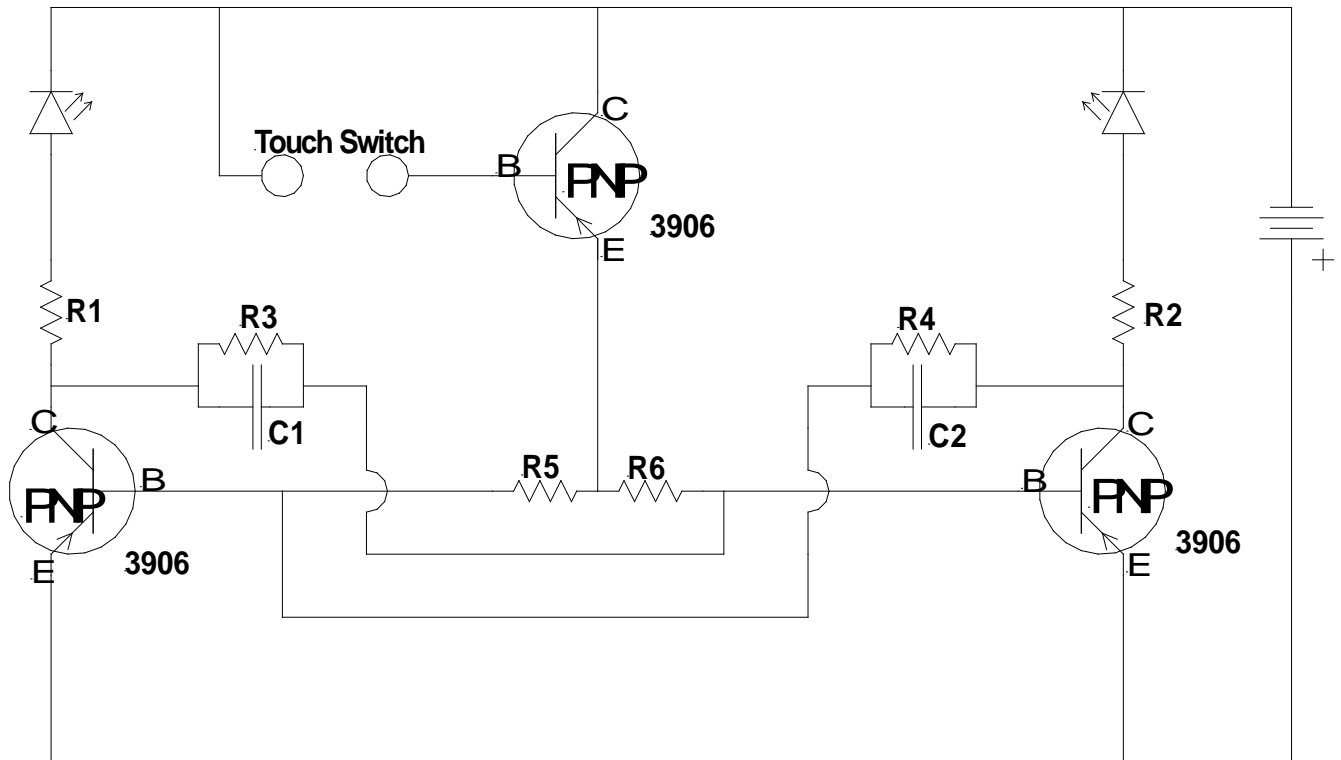


# Bonus Breadboard #1

## *“Two LED Decision Maker”*

- 1) Breadboard the following schematic diagram. Make sure your wires are flat! Set the Power Supply to 9 volts. Notice where the positive and negative are on this schematic.



R1 - R2: 330 ohm (orange, orange, brown)  
R3 - R6: 60K ohms (blue, black, orange)  
C1 - C2: .01uf (10nf)

- 2) The circuit is working properly when you place your finger over the touch switch and both LEDs turn on. When you remove your finger, only one LED remains on.